

PUNCHING SHEAR REINFORCEMENT

Shear Stud Rails



Punching Shear Reinforcement

Punching shear is a type of failure of reinforced concrete slabs subjected to high localised forces. In flat slab structures, this occurs at column support points. The failure is due to shear and this type of failure is critical because no visible signs are shown prior to failure.

Strengthening slabs with punching shear reinforcement such as shear stud rails is a fast and economical solution for the problem. SRG Global's range of shear stud rails are a solution to this problem and are manufactured in Australia to comply with Australian Standards.

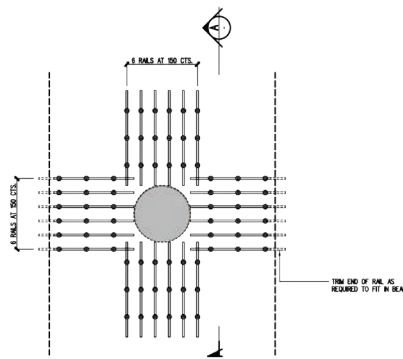
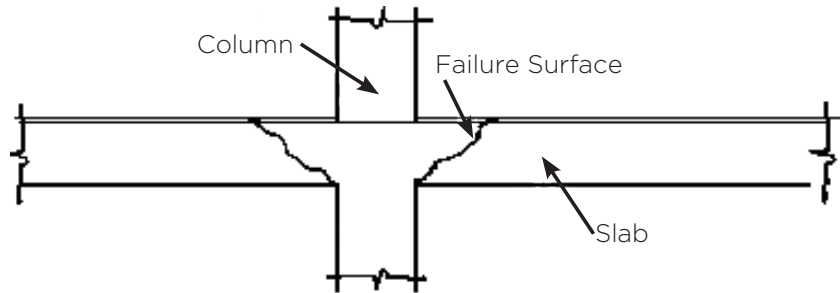
Shear Stud Rails

SRG Global's Shear Stud Rails comprise of double headed forged steel studs welded to rails. These provide punching shear reinforcement to the slab as it increases the area that is responsible for transferring vertical loads to the column. This localised reinforcement ensures thin slabs can be utilised without being governed by punching shear issues.

Benefits

- Australian made product compliant with
 - AS3600:2018
 - ASTM A1044-16a
 - ACI 318-4
 - ACI 412.1R-08
- Eliminates column caps
- Higher shear capacity than stirrups which are labour intensive to assemble on site and create heavy congestion of reinforcement
- Simple and fast installation on site
- Engineered product with accurate punching shear capacity
- Studs tested for tensile capacity
- Allows for faster floor to floor cycles

SRG Global offer 12mm, 16mm and 20mm stud diameters with lengths and spacings to suit any design. We pride ourselves on supplying high quality products at competitive prices and short lead times.



STUDRAL ARRANGEMENT TYPE SRI

